



**PIMACHITAWIN OMA MISIWE KA-PIMI-  
SAGAK (BOREAL) SAGASTENOHK ITEGE-ISI  
SASKATCHEWAN**

Canada's Boreal Forest, misiwe ka-pimi-sagaw Newfoundland egwa Labrador ochi iskhokh Yukon. Kwayesk minonagwan oma aski ka-pimi-itatinak. Egota oma ka nitawigicik nanatok minahigwak egwa mitosak. Wapiski egwa kaskitewi minahik (White/Black Spruce), Oskatak (Jack Pine), Wagiganatik (Tamarak), Napagisita (Balsam Fir), Mani Mitos (Balsam Poplar), Waskway (White Birch), Wapi Mitos (Trembling Aspen) egwa atamaskamik askiya ochi. Ka-napostegi ohi, mistahi minwapatan. Egota oma ka-astek kaskasiganiwi pimi (carbon reservoir) atamaskamik. Ewogo oma peyak ka-mawaci- misak kaskasiganiw pimi misiweskamik.

Canada's Boreal Forest, misiwe ka-pimi-sagak, kwayesk wenotan inigok nanatok pisiskiwak egota e- wigichik. Mahiganak (wolves), kaskite maskwak (black bears), moswak (moose), atikwak (caribou), mawgwak (loons), migisiwak (eagles), ominacheesak (wolverines), wacaskwak (muskrats), wapischanak (martins) egwa amiskwak (beavers). Asichi michet nanatook pinesisak egwa ginosewak.

Sagahi-atikwak (Boreal woodland caribou) misi-notaw ati-itawak. Tapwe mistahi oma ginomatenitagwan. Asay namatewak ita kayask mana ka-gi-ayayachik, sawanohk isi. E-ochichipanik 2003, sagahi-atikwak (Boreal woodland caribou) gi-maskinahigasowak 'threatened under the Species At Risk Act (SARA)'. Omisi egwa Province of Saskatchewan mina 'Conservation priority' isi kanawapamiw ogi sagahi-atikwa. Mamawi atoskewak ohi federal egwa provincial owanasowewak. Pogo kita-atoskatagik aga wigach kita-meschinet ogi sagahi-atikwak (Boreal woodland caribou). Ewogo oma masinahigana, Species At Risk Act (SARA) egwa Province of Saskatchewan ka-tepagenimochik kita-pimachihachik ohi Boreal Woodland Caribou, mistahi sogimagan.



Egota oma Boreal, ita misiwe ka-pimi-sagak, witagwana itawina, michet mina Ininiwak (First Nations) egota wigiwak. Kaginaw anisiniwak mamisitotamwak oma Boreal, ka-misiwe-sagak. Egota ohci e- pimachisochik, kayasi-enato-inini-pimachisowin egwa oski-pimachisowin. Forestry, ka-otatigecik sagak ochi, kiyapich mistahi mamisiwak anisiniwak. Ewogo ochi ka-animak oma kita-manachichigatek Boreal, ka misiwe-sagak, mina kita-minawachi-pimachihichik Sagahi-atikwak (Boreal woodland caribou). Canada mina soniyagew oma ka-otatigecik ita ka-misiwe sagak (Boreal). Egosi maga, aniwak animan kita miskwenitagik tansi kita-isi- nanagachitachik oma ka-misiwe sagak (Boreal) kigi kita-kechinawochik tansi oma isi ka-kitwam kita-nitahigimagak sagak (sustainable forestry).

Oma masinahigan misiwe ka-pimi-sagak (Canadian Boreal Forest Agreement) ochi, itaschigatek kita mamawi-atoskaniwak. Itastew anih otatosenaganak Forest Products Association of Canada (FPAC) ka-soniyagatagik sagihi-mita egwa ka-wichiwechik ohi Environmental Non-Government Organizations (ENGOS) anih askiya ka-nanagachitachik kita-witatoskemachik ogi nistayak ohci ogimaganak - federal, provincial egwa Inini Oгимayina (Aboriginal governments) egwa anigi itawina ka pimi-astegi ita anima ka-misiwe-sagak (Boreal Forest). Ekwani ohi ansiniwak kita-ositachik 'recommendations' egota ka-wichigatek tansi oma ka-itenitakig anisiniwak kita-gi-isi-pimpanichigatek kegway. Ewogo oma tanita meschi kita-pimamok egwa kita-opinigatek anima oganenichigewi-askigana, ita saghazi- atikwak kita-pimatisichik ota askihk egwa mina aga kita-wistachigachik (Protected Areas and Caribou Conservation Plans). Ewogo ochi oma Saskatchewan Regional Working Group ka-gi-opinigatek, kita-gechinahochik isa FPAC ogimawin egota oma giskaciwanohk (Saskatchewan) kita-isi-pagitinasot egwa kita-wichihiwet.

Asay anih SK RWG ka-otagisochik, Weyerhaeuser egwa Canadian Parks and Wilderness Society – Saskatchewan Chapter (CPAWSSK), tapwetatowin otitamwak anih 'recommendations' ka-gi-animochigategi. Egota ka-gi-wichigatek tansi oma ka-itenitakig anisiniwak kita-gi-isi-pimpanichigatek ita sagahi-atik kita-isi-pimachihit (Caribou Conservation Plan), pichahik Kagwa-wacihk (Pasquia Porcupine Forest Management Area (FMA) egwa mina Maskego Sipi egwa tagotatin asici (Mossy River watershed) ita mistahi askiy ka-oski-itaschigatek 'protected area' egota oma sagahi-atigwak kita ganawenimichik, Lobstick sagahigan (Lobstick Lake RAN) mina kita-machi-pimpanichigatek. Ohi 'recommendations' ka-gi-animotagik kita-pimitisahigategi mitoni tapipaniw ka-isi pimpanichigatek oma Canadian Boreal



Forest Agreement (CBFA). Ewogo oma CBFA masinahigan, nistahinagwan e-isi-wichihemagak askiy kita-gistenitagwak nochimihk, egwa mina anisiniw nanatok kita-isi-ochi-pimachihisot.

RWG nistahinamwak tansi wanasowewin e-itastek oma askiy ka-wi-apatak. Anih ka-niganiskagik kaginaw governments, federal, provincial, municipal egwa Aboriginal governments winawaw wanasowatmwak tansi kita-isanik. Anisiniwak mina ita ka-wigichik kechiwak, pogo kita-sitoskagik ohi recommendations, ka-gi-isi-wichigatek tansi oma kita-gi-isi-machitaniwak egwa tanite maweschi anima askiy kita-wi-apachichigatek.

Ohi 'recommendations' ka-gi-animotagik kita-pimitisahigategi newo aski gi-nochitawak mawesk e-gisi-masinahigategi. Pitama kineski anisinwak gi-animotamwak. Ogi kaginaw gi-mamawi-animotamwak; Provincial egwa Inini Ogimayina (Aboriginal governments), Ininiwak, Apatahigosanak, kechiwak itawina egwa kaginaw anisiniwak ka-soniyagatagik anima askiy. Omisi mina gi-itochigatew, kawesk anih ka-nanagachiyachik sagahi atigwa ka-isi-mamawi-ayanit, anih mina ka-nanagachitachik ogiskatatigewin oteh ati-nigan egwa anih ka-ganawapatagik 'protected areas' tanite oma sagahi-atigwak kita gi-anichik egwa kita-pimachihichik. Kaginaw ohi kegwaya-gi-mamawi ganawapachigatewa. Omisi gisenitagwan kita-isanik, kita-gaskitawak FMA ka-otatigechik ita sagahi-atigwak ka-ayachik. Egosi maga sagahi-atikwak kita-mino-ayawak egwa kita-paspiwak. Namona natenimiwak kita-naspichi namatechik.

Egwani ohi 'recommendations' ka-gi-animotagik kita-pimitisahigatenigi ka-wichigowak provincial goal ka-otitagik, sagahi-atigwa kita-tapitawi pimatisichik egwa mina ka-nitawigitochik nawach michet. Aga mina kita-osami-apachichigategi ita sagahi-atigwak ka-ayachik. Ketnach ina,

papiyatak pogo ka-ayachik egwa aga- kita-sipweyamogaticchik kwayesk kita-pimitisahigatek oma Environment Canada's Boreal Woodland Caribou Recovery Strategy, kita-paspichik ohi sagahi atigwak.

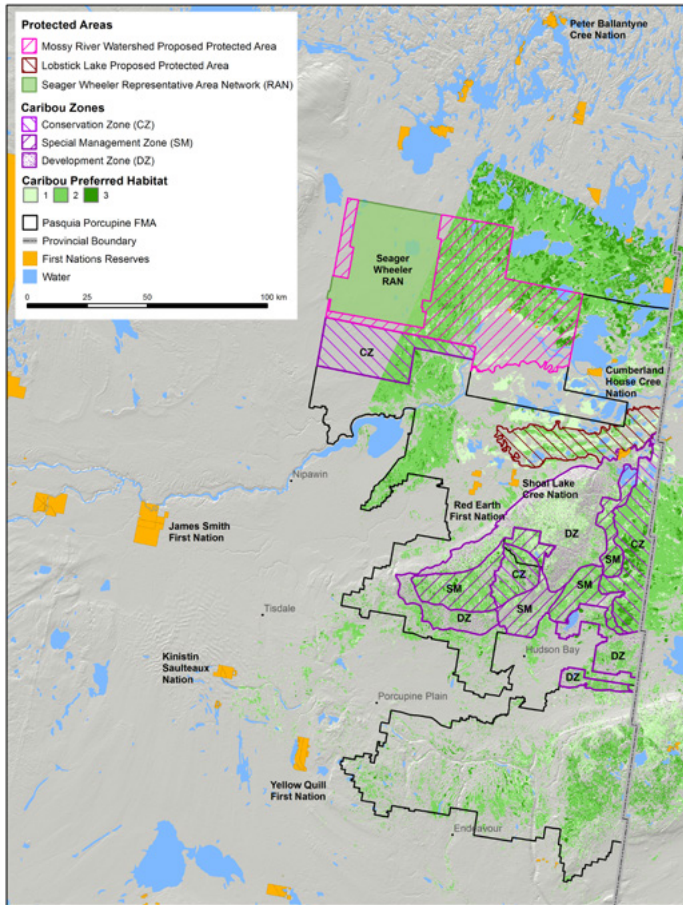
Nisto oskahi oganenichige-askiya 'zones' osichigatewa kita-sitoskigatek oma sagahi-atigo masinahigan. Egwani ohi:

1. Oganenichige-askiya (zone) ita mawatesi-minwasik askiya sagahi-atigwak ochi;
2. Oganenichige-askiya (zone) ita ogiskatatigewak kita-nagatagik sagawa ita nochimihk sagahi-atigwa ka-ayanit egwa 'connectivity' kita-atoskachigatek ita otatigew ka-atosket egwa ita sagahi atigwak kagwegask ka-itotechick egwa ita ka-wigichik; egwa,
3. Oganenichige-askiya (zone) ita notaw sagahi-atigowi-micisowina ka-nitawigigi, egota aniwak ka-pagitinigatew kita-otatiganiwak.

Ewogo oma Maskego Sipi (Mossy River) ita askiy ka-nanagachichigatek, sagagi atikwag ochi, 'recommendation' gi-animochigatew misiwe oma ota aski ka-mawatesi misak pichahi askiy, kichigamikohk ochi, ewogo oma Giskachowano sipi egwa pimi-igachiwagi kotagwa sipiya ochi, ewogo oma Saskatchewan River Delta ka-mawatesi misak ita ka-tostogachak inland delta ka-itagwak North America. Nanatok itawina, ita Ininiwak egwa mina pagan-ite-ka -ochichik anisiniwak, wichiwewak. Megwac oma pimi-wichiwewak egwa tapitahi-wigomiwak kita-ganawapatagik oskahi, 'protected area' tanite oma sagahi-atigwak kita-gi-anichik egwa kita-pimachihichik, pichahihk Maskego Sipi (Mossy River).

The Lobstick Lake Representative Area Network (RAN) is also recommended for full protection to extend the management regime that is already in place as a result of Pasquia Porcupine Land Use Plan. Together with the existing protected areas and the conservation zones in the caribou plan a robust network of conservation lands is taking shape in the region that will help to conserve the rich biodiversity of Saskatchewan and buffer climate change while also supporting the economy.

## Aski masinahigan omisi itastew “ Atigwak egwa Kananagachichigategi Askiya Masinahigan”



Egwani ogi ‘Bog Herd’ sagahi-atigwak maskegohk ka-ayachik. Kagwegask ka-pe-isi-atotechik Manitoba egwa Saskatchewan. Egota oma osam-pogo apitaw ita ka-misiwe sagak ‘Mid-boreal Plan Ecozone’ ita ecological zone ka-pimaskwayak. Egwani ogi Boreal Plain sagahi-atigwak, wanaw sawanohk isi-ayawak egwa animaniw ita ka-ayachik. Mistahi anisiniwak e-papaganitachik aski tapiskoch oma environmental change egwa habitat degradation anima ka-meschigahiganiwak. Ewogo oma climate change, nawac ka-ati-gisowahak askiy, egota ochi itenichigatew nawach kiwetinohk kita-isi atotechik ogi sagahi-atikwag. Agoni omisi kita-ati-ispaniw, atit pogo kita-pimatisiwak sagahi-atigwak, anihni oski- sagahi-atigwak egwa ketehi-sagahi-atigwak kita- animitawak ka-paspichik, notaw kita-nitahigitowak, namona kwayesk kita-isi-michisochik kiwentohk isi egwa namwac kita-nanagiskatowak opime ochi sagahi-atigwak kita-isi-wichetochik. Namwach minwasin kita-nestawi-ayachik ogi pisikiwak maga minwasin papaganite ohci kita-nagiskatochik.

Ewogo ogi tostogaciy sagahi-atigwak (Bog herd), nantaw 225 iskok 275 pisikiwak agimiwak egwa miskigatew e-otapegisigik. Iteh anihni North Interlake herd sagahi-atigwak ka-ayachik o Manitoba, egote oma ka-isi-wagotochik. Nantaw 25 iskok 50 Bog herd ka-agimichik e-ayachik Giskaciwanohk (Saskatchewan) egwa anigi kotagwak anihni Manitoba ayawak.

Egota ogi ka ayacik Bog herd sagahi atigwak, cigi gistapinani askiy apisci giwetinohk isi, pagisimonahk isi egwa nigapenohk isi, Cumberland aski kiwetinohk isi asici ohi mamihk isi ka-mamagi-peyahgi sahgahigana (Cedar Lake / nipiy kanaginigatek egwa Winnipegosis sahgahigan) sagastenohk isi, nagachipesinak ka aswi wichetochik ogi pisikiwak.

Misiwe iteh ochipaniwa recommendations, egota ka-wichigatek tansi oma ka-itenitakig anisiniwak kita-gi-isi-pimpanichigatek kegway. Papeyak isi anisiniwak gi-ayamiwak asichi ita ka-michetichik. Kichi-mamawi-apiwak egwa nanatok mamawapina gi-napo apachitawak e-mosaginigategak ohi recommendations, tansi oma e-isi-mamitonentagik anisiniwak. Ewogo oma kawesk gi-nochigamwak kinesk atoskewin iskokh kita-masinahigategi ohi recommendations.

Saskatchewan Regional Working Group nanaskomowak kaginaw anihni ka-gi-wichihigochik. Nanaskomewak opigisewak pogi iteh ochi ka-gi-witagik oma tansi e-itenitagik, e-isi-wapatagik egwa ka-gi-witagik tansi kita-itaschigatek kegway. Wayis ohi nanaskomiwak otatoskewak ka-gi-nohte-wichiwechik Government of Saskatchewan ochi egwa mina Ininiwi oniganiwak ka-niganiskagik Aboriginal Governments. Mistahi nanaskomiwak inigok e-gi-witatoskemachik anihni otatoskewa Canadian Boreal Forest Agreement Saskatchewan ochi.

Mistahi kistenitagwan kayasi-Inini-kisenitamowin ka-gi-witagik ketihak, oniganiwak egwa kotagwak anihni ka-ochi-tipenitagosichik Waskahiganihk (Cumberland House Cree Nation, Northern Village of Cumberland House), Opagoschiganihk (Peter Ballantyne Cree Nation), Migoskiwagahk (Red Earth Cree Nation), Pagwaw Sagahiganihk (Shoal Lake Cree Nation), James Smith Cree Nation, Kinistin Saulteaux Nation ewga Yellow Quill First Nation. Kaginaw nanaskomiwak inigok e-gi-atamiskagecik. Asici mina otatoskenagak Saskatchewan Ministry of Environment ochi. Anihni ‘working group’ ka-gi-atoskechik, pogite ochi gi-sitoskawak egwa gi-maminomawak tansi oma ati-nigan kita-isi minopanik kaginaw kegway. Kaganaw anisiniwak gi-mamawi-wichihitowak.

Ewogo ohi SK RWG ganawapamewak otaoskewa Forest Management Advisory Committee (FMAC) ochi. Anihni ka-apichik anisiniwak FMAC maminomewak anihni ka-nanagachitacik ita ka-pimi-sagak. FMAC gi-wigomewak stakeholders, anihni ka-otagisochik ita anima misiwe ka-pimi-sagak, egwa egota gi-ochipaniwa ohi recommendations, egota ka-wichigatek tansi oma ka-itenitakig anisiniwak kita-gi-isi-pimpanichigatek ita anima misiwe ka-pimi-sagak.